

For more information, contact:

Mrs Kemo Pepena-Guise
Manageress Strategic Planning Section

T: (+675) 324 0611 F: (+675) 323 1182 | E: kemop@ncdc.gov.pg

National Capital District Commission
PO Box 7270
BOROKO, NCD 111
Papua New Guinea

Level 2, New City Hall
Waigani City Centre
Section 390, Lot 01
Waigani Drive



NATIONAL CAPITAL DISTRICT COMMISSION
Regulatory Services Department

OPEN SPACE POLICY 2018



INFORMATION BROCHURE

Strategic Planning Section, January 2018

Why are our Open Spaces important?

- Parks and Open Spaces provide valuable breathing space within our densely populated city and are vital to the success of urban communities.
- Open space are places to enjoy the natural environment, places to relax and spend time away from the stresses of working and urban living, for children to play and provide avenue for physical fitness for our health and well-being.
- Parks and open space vary in size, form and the functions that they perform. Public open space is usually categorised into a hierarchy of neighbourhood, district and regional open space and can be used for either passive or active recreation.
- Planned open spaces are outdoor libraries to read the people, feel the community and identify the socio cultural values of city people which is used to measure liveability and environmental success of the cities according to Adejumo, T 2002.

What is an Open Space Policy?

An open space policy is a statutory document which will be used to assess all development applications for planning permission pertaining to open space development, allocation and distribution in the NCD. The Policy outlines the principles that guide the planning and decision making with respect to the provision of recreational activities, sporting facilities and natural habitat. It also outlines NCD's key priorities for recreation provision and the actions it will take over the next 5 years to achieve these priorities.

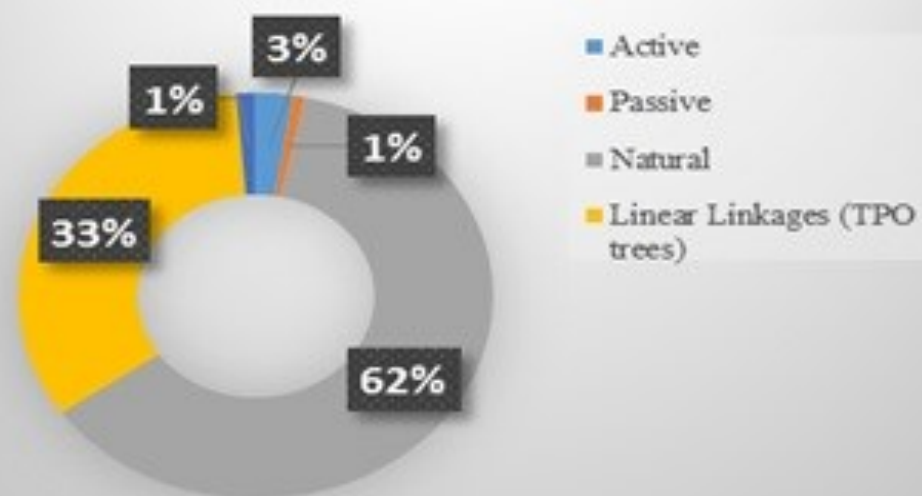
Why is an Open Space Policy needed?

To safeguard the future of our open spaces for recreational activities essential to mental and physical well-being of our city residents. The policy sets out clear *objectives*, *guiding principles* and *desired outcomes* setting out how our open spaces should be designed and located within different areas in NCD.

Current stock of Open Spaces in NCD

The available amount of open spaces in NCD is **5114.591ha**, of which **182.5586ha** are developed open spaces. This figure is distributed among built sporting facilities with **154.4616ha** and built recreational parks and gardens occupy **28.0970ha** (Adventure Park & Nature Park). The remaining amount of undeveloped open spaces for passive is **33.9938ha** and active is **44.4667ha** and most are in very poor conditions and in dare need of upgrading. Uncounted open spaces of **104.2028ha** is currently occupied by informal settlements. Table 1 indicate various allocation of open spaces in the 3 electorates in NCD. Tree Preservation Order sites are categorized under linear linkages and provide a scene of green network along road corridor. There are **35** declared TPO sites approved by the NCDPPB protecting **2303** trees of varying species. However, further field survey is required to verify this figure. Moreover, historical trees at 3 TPO sites have been lost to developments such as Ela beach Recreation Park (Casuarina trees), Hunter Street (Mango trees), Koura Way (Neem trees/Rosewood) and Sir William Skate Memorial park (Neem/Casuarina).

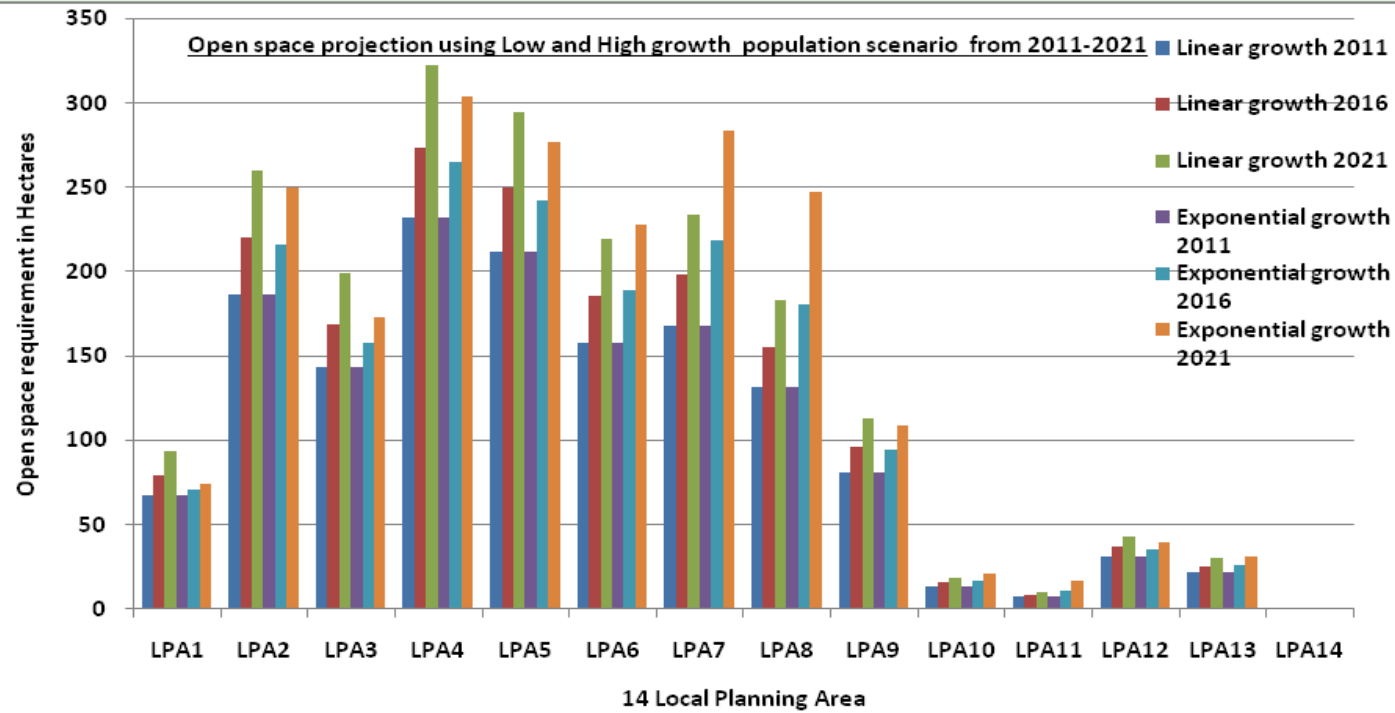
Percentage of Land Area covered by each Category of Open Spaces in NCD



OS Classification	Annotation	MNW (ha)		MNE (ha)		MS (ha)	
		Devel-oped	Undevel-oped	Devel-oped	Undevel-oped	Devel-oped	Undevel-oped
Counted OS							
Passive Open Space	P	6.0217	9.0672	22.8586	13.0546	4.7116	5.3103
Recreation park	Rp	0.1947	5.066		10.4506		5.3103
Landscape amenity	La		4.0012	0.5886	1.531	0.2416	
Civic Spaces	Cs				1.073	4.47	
Botanical Gardens	Bg	5.827		22.27			
Active Open Space	A	80.093	5.1569	35.594	0	43.6006	20.2013
Sports Fields	Sf		5.1569				20.2013
Stadiums	St	17.213		34		9.3371	
Specialized sports	Ss	62.88		1.594		34.2635	
Natural Green Spaces	N	0	353.4867	0	4.815	0	557.5059
Ridgetop Areas	Rt		10.0277		4.815		
Storm water reserve	Sr		2.789				
Wetland areas	W		340.67				82.34
Islands	Is						475.1659
Uncounted OS		20.4758	0	82.141	0	1.4016	0
Linear Linkages	L						
TPO sites	TPO						
Other							
Squatter settlement	Sq	20.4758		82.141		1.4016	

Population analysis per Open Space standard

The demand for open spaces required in each of the LPA is determined by the population growth. Graph below indicate open space projections using low and high growth population scenario from 2011-2021. LPAs 4,5,7,8, 2 & 6 have high demand for open space provision due to high population concentrations in these LPAs. In contrast, projected demand for open spaces in LPAs 10-13 is very low due to its low population growth. LPA 14 has no demand for open spaces as there is no population count according to the 2011 National Census data. The population will constantly increase to 514, 599 with 2058.2ha open space required to meet this increase. Assessing the current provision against the accessible open space standards shows that the quantity of provision is below acceptable standard. Therefore raising quality standards at existing sites is a higher priority than creating new spaces at this time. As population increases, demand for open spaces will also increase and will put additional demand on existing recreational facilities.

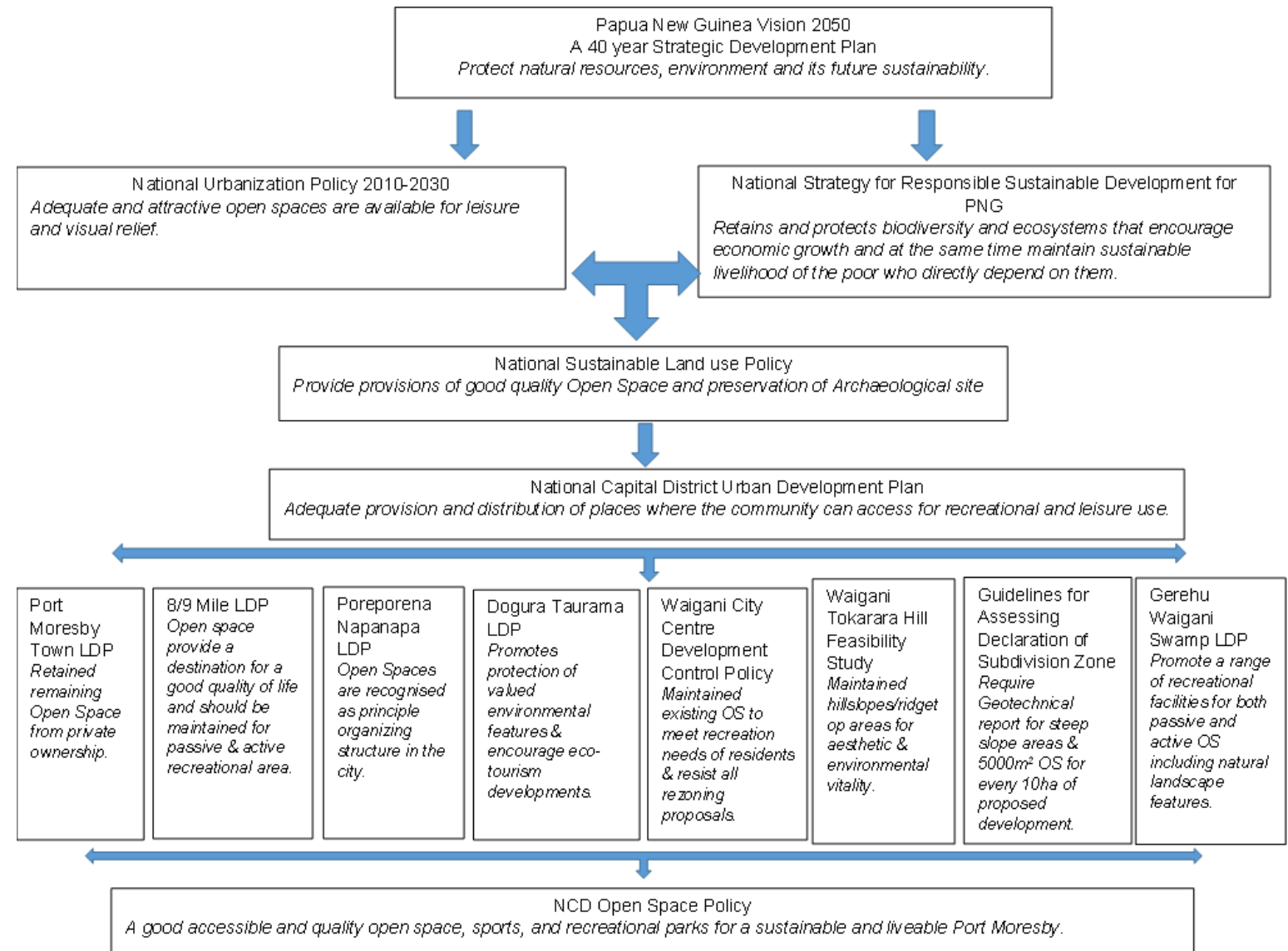


Quality of Open Spaces

The quality and quantity of open spaces, sports and recreational facilities have been a pressing issue in the NCD. There has been a great decline in funding and investment in open spaces by NCDC resulting to loss of open spaces to private entities and squatter settlements and deteriorating recreational facilities. All public accessible open spaces were below quality standard with no park furniture, rundown facilities and unusable spaces. The challenge for NCDC now is to reinvigorate our open spaces, recreational parks and sporting fields with new features and facilities that will put them at the centre of an urban renaissance. It needs joined-up thinking to provide a platform for new partnerships and initiatives and to gain political and community support.



Where does this Policy fit into the overall Strategic Plans & Policies from National Government to the Local Level Government?



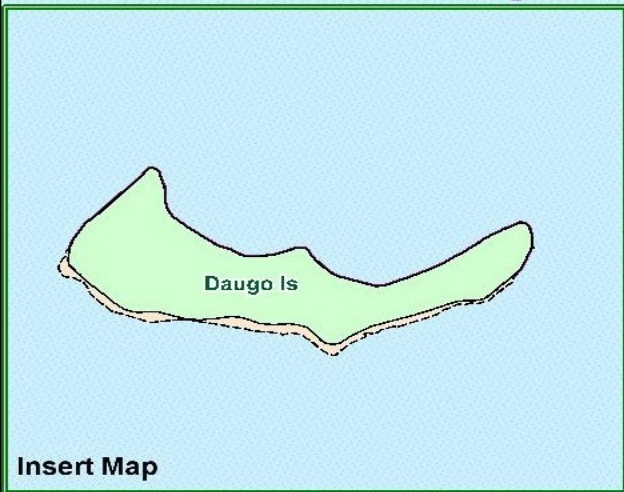
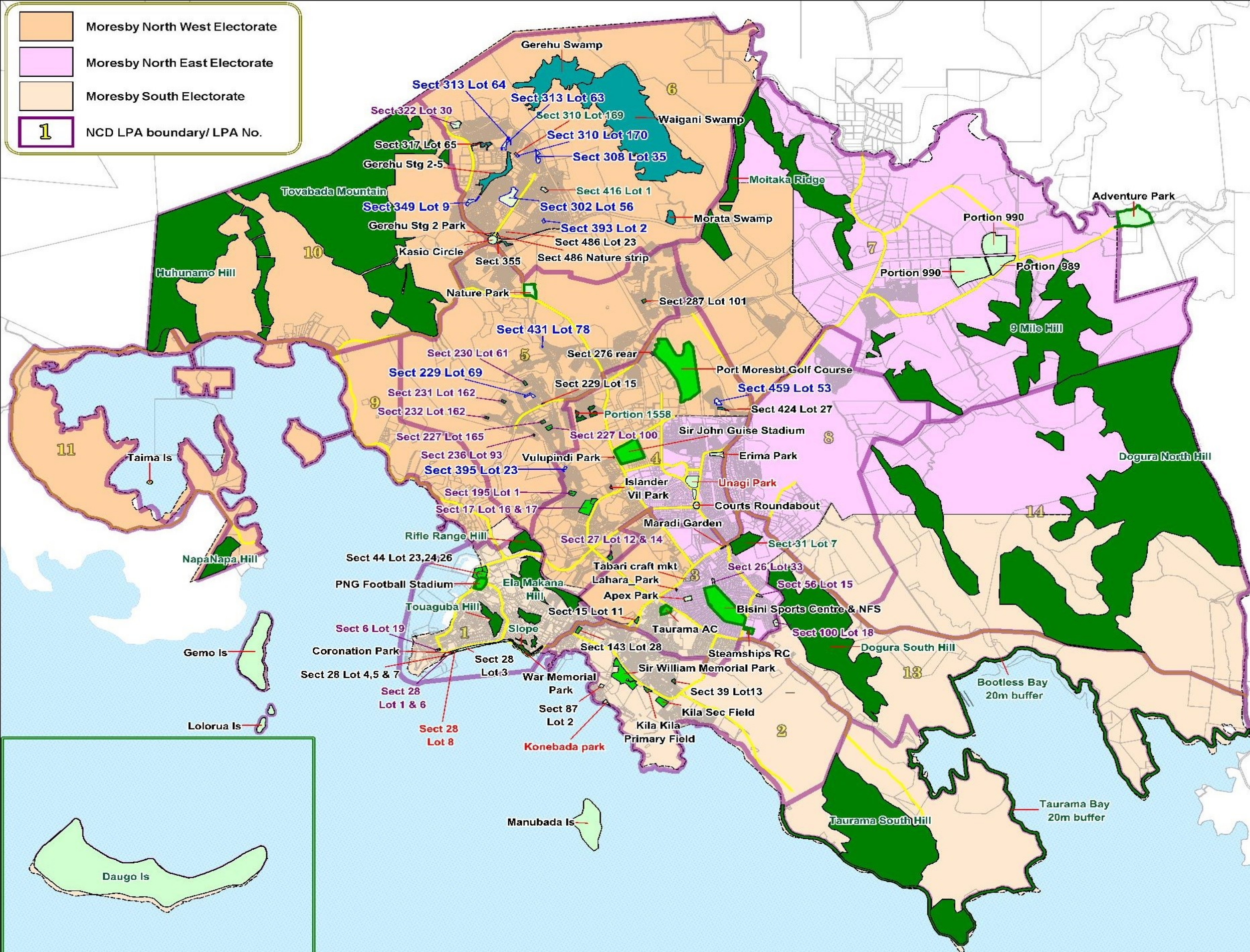
How will this Policy improve our Open Space?

This policy needs the support and involvement of the city residents, politicians and other internal and external stakeholders of the Commission both government and private sectors to work together to achieve the following:

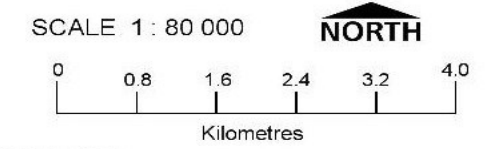
- To ensure that planning provides for enough public open spaces and equitable distribution and management of open spaces within NCD;
- To ensure that an appropriate amount of public open spaces, Sports and Recreational Park is provided to contribute towards the recreational and social needs of the community in appropriate locations in NCD;
- To safeguard existing open spaces and sites identified for future open space provision;
- To ensure that areas of open spaces are provided as an integral part of new residential development and that appropriate arrangements are made for their management and maintenance;
- To ensure that new open space areas and sporting facilities are convenient and accessible for all groups of people in the city, particularly children, youths, elderly and disabilities;
- To ensure that the provision of new open space areas and sporting facilities is in keeping with the principles of environmental conservation and help sustain and enhance urban biodiversity;
- To achieve high standards of seating, design and landscaping for existing and new open space areas and sporting facilities

EXISTING OPEN SPACES IN NCD

	Moresby North West Electorate
	Moresby North East Electorate
	Moresby South Electorate
	NCD LPA boundary/ LPA No.



NATIONAL CAPITAL DISTRICT COMMISSION REGULATORY SERVICES



DATA SOURCE:
 1. NCD Digital Cadastral Database, National Mapping Bureau 2012
 2. Strategic Planning survey data, May 2013
 3. NCD UDSS, Wilber Smith Associates, 1995

COORDINATE SYSTEM
 Map Projection: Universal Transverse Mercator
 Datum: World Grid System 1984, Zone 55 South,
 Map Creation Date: 22nd January, 2018

PHYSICAL PLANNING ACT 1989 NATIONAL CAPITAL DISTRICT OPEN SPACE PRESERVATION ORDER NO. _____ NCD ELECTORATES, PORT MORESBY

Plan referred to (_____) Open Space Preservation Order No. _____ Sealed by the National Capital District Physical Planning Board

Date: _____

The Common Seal of National Capital District Physical Planning Board is hereby affixed in the presence of

.....
Chairman

LEGEND:

-  Active Open Space
-  Passive Open Space
-  Ridge top/ Hill slope areas
-  Wetlands/ stormwater reserve
-  Special Purpose Leases
-  20m Environment Protection Zone
-  Major road network

RED TEXT - Title in progress
GREEN TEXT - Land file creation
PURPLE TEXT - Special Purpose Park Reserve

The data presented on this map has been prepared solely for the purposes of the NCD Open Space Preservation and remains the property of NCDC. Every effort has been made to verify all data, however, complete accuracy cannot always be guaranteed.